

For Sale 3.94 Acres

Plus - 1 Acre Additional Lot Available

SKETCH

TO ILLUSTRATE DESCRIPTION OF
PART OF LOTS 40 AND 41
CONCESSION 13

TOWNSHIP OF SMITH
COUNTY OF PETERBOROUGH

SCALE - 1 INCH = 100 FEET

W.A. BENINGER O.L.S.
1991

NOTE: THIS IS NOT A PLAN OF SURVEY.
THIS SKETCH WAS COMPILED FROM
REGISTRY OFFICE RECORDS.

PETERBOROUGH, ONTARIO
22 AUGUST 1991

ROAD ALLOWANCE BETWEEN
CONCESSIONS 13 & 14

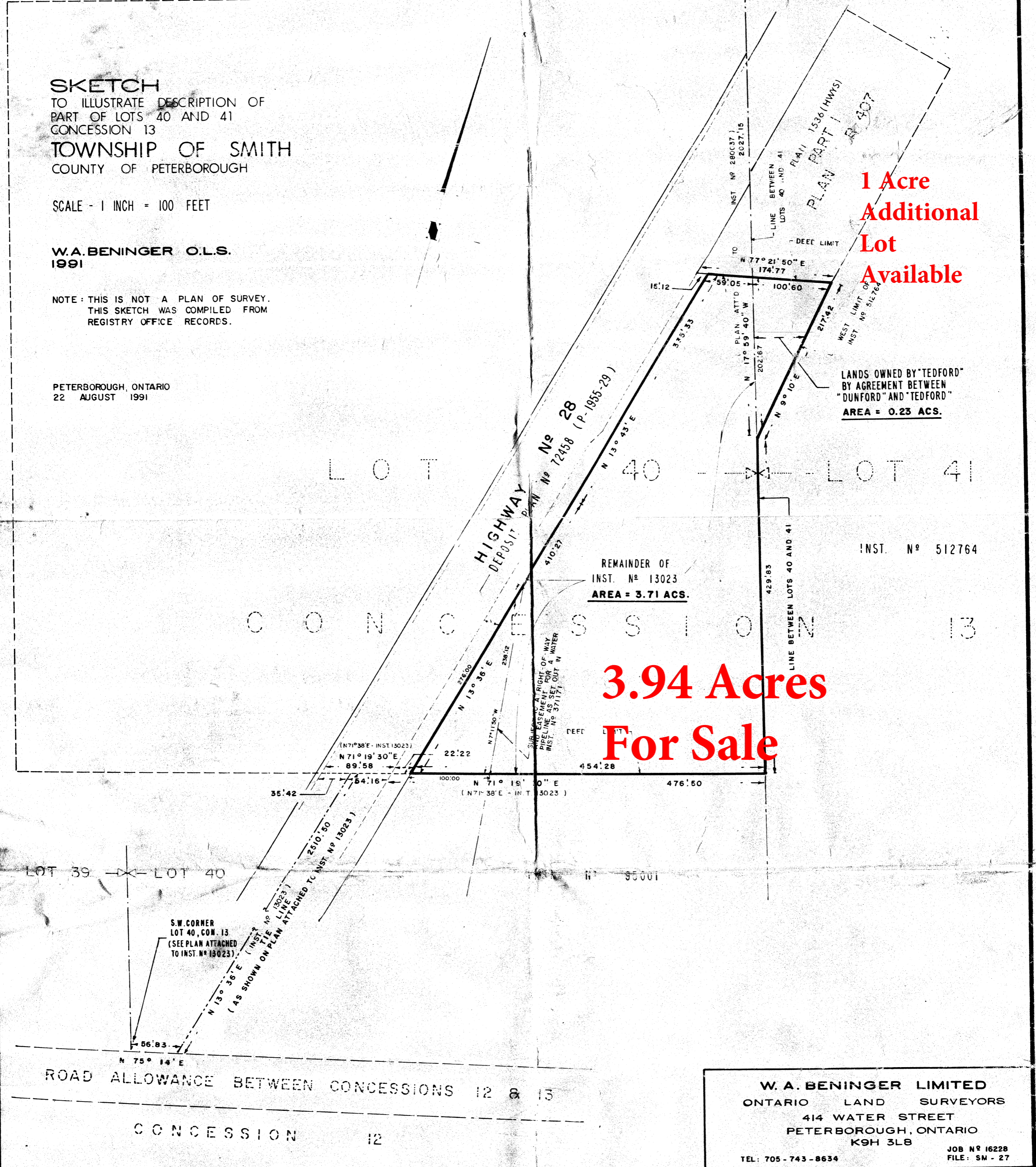
N.W. CORNER
LOT 41, CON. 13
(SEE PLAN ATTACHED
TO INST. NO. 280037)

1 Acre
Additional
Lot
Available

LANDS OWNED BY "TEDFORD"
BY AGREEMENT BETWEEN
"DUNFORD" AND "TEDFORD"
AREA = 0.23 ACS.

REMAINDER OF
INST. NO. 13023
AREA = 3.71 ACS.

3.94 Acres
For Sale



W. A. BENINGER LIMITED
ONTARIO LAND SURVEYORS
414 WATER STREET
PETERBOROUGH, ONTARIO
K9H 3L8
TEL: 705-743-8634
JOB NO 16228
FILE: SM-27